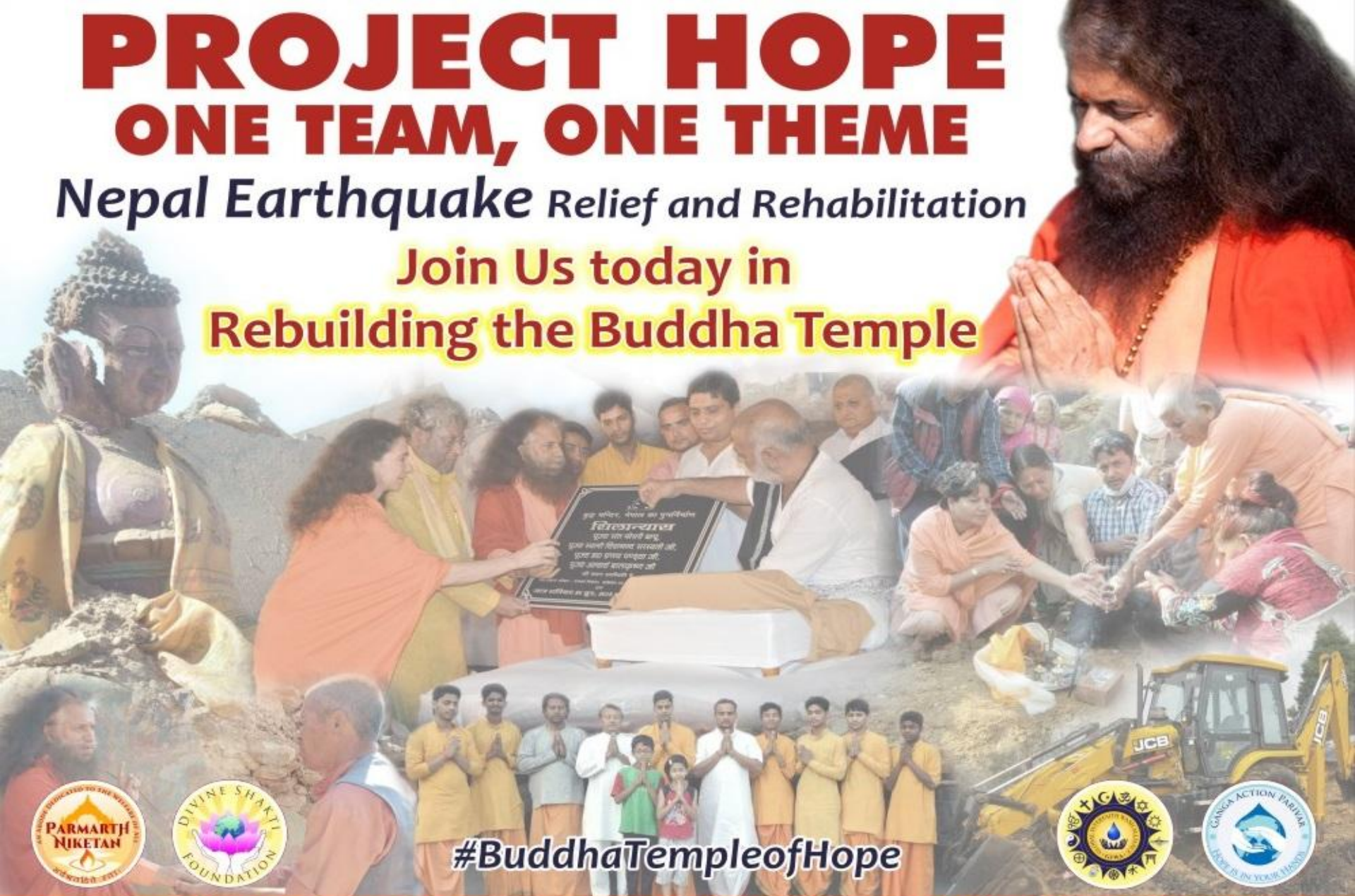


# PROJECT HOPE

## ONE TEAM, ONE THEME

Nepal Earthquake Relief and Rehabilitation

Join Us today in  
Rebuilding the Buddha Temple



#BuddhaTempleofHope



Parmarth Niketan Ashram, PO Swargashram Rishikesh, (Himalayas) Uttarakhand, 249304 India  
Contact Us: 0135-2220070, 07579029225, Email: [hope@gangaaction.org](mailto:hope@gangaaction.org)  
Website: [www.ProjectHope-India.org](http://www.ProjectHope-India.org), [www.DivineShaktiFoundation.org](http://www.DivineShaktiFoundation.org), [www.WashAlliance.org](http://www.WashAlliance.org)



# Project Hope

## *Relief, Restoration and Rehabilitation*

- ❖ Founded, led and blessed by **HH Pujya Swami Chidanand Saraswatiji**, *President of Parmarth Niketan (Rishikesh)*
- ❖ Under the Project Hope umbrella, **Global Interfaith WASH Alliance, Divine Shakti Foundation and Ganga Action Parivar**, along with many other dedicated partners, are working together as one team with one theme: in the service of humanity during times of disaster and crisis.
- ❖ **Project Hope has served during the:**
  - Nepal Earthquake (2015)
  - Flash Floods in Uttarkhand (2013)
  - Tsunami in South India (2004)
  - Bhuj, Gujarat Earthquake (2001)
  - Chamoli Earthquake (1999)
  - Orissa Floods (1998-1999)
  - Uttarakashi Earthquake (1991)





# Project Hope

## *Responds to the Tsunami in South India*



❖ In the wake of the tragic **2004 tsunami** in **Cuddalore, Tamil Nadu and Pondicherry** in **South India**, **Project Hope** Constructed/ Renovated:

- Orphanage
- School
- Medical Clinic
- Women's Vocational Training Center
- Women's Residential Center
- Rebuilt more than 100 Homes in Pondicherry

**Learn more:**

[www.projecthope-india.org](http://www.projecthope-india.org)



# Sustainable Redevelopment After Deadly Floods in Uttarakhand

- ❖ For the **2013 devastating flash floods** in **Uttarakhand**, **Project Hope** provided:
- Short and long term relief
  - Reaching out to more than **40 villages** in flood affected regions
  - Medical treatment and care of more than **60,000 patients**
  - Rehabilitation of a **Temple and Garahat Project in Parodi , Tehri Garhwal**
  - Complete **reconstruction of two schools**, one in Rudraprayag and another in Uttarkashi
  - Continual **Green, WASH Programs, Initiatives and Awareness** in many more schools

Learn more: [www.projecthope-india.org](http://www.projecthope-india.org)





# Devastation in Nepal



- ❖ In April 2015, a **catastrophic earthquake** measuring **7.8** on the **Richter Scale** hit Nepal
- ❖ Continuous aftershocks (of up to **6.8 magnitude**) took place for weeks afterwards
- ❖ Most of the historic sites and temples are completely devastated, thousands of homes have collapsed, over 7,000 people lost their lives in the tragedy, over 10,000 people were injured and entire villages have been destroyed.







# Pujya Swamiji Visits Nepal

Pujya Swamiji was immediately on the scene, rushing three huge trucks of supplies, inspiring volunteers from Nepal and India to aid thousands of people, personally distributing relief material to affected families and assessing the on-the-ground reality and damage.





# Project Hope Responds



More than **7 large trucks** of relief materials have been dispatched to Nepal where they have been **bestowed** on the needy including:

- Over **10,000 blankets**
- **10,000 water bottles**
- **15,000 packets of daily supplies**
- **5,000 tents and tarpaulins**
- **Foods supplies** and many other items

More than **25 villages/towns** with nearly **11,000 families** have been served by our dedicated volunteers

**Read more about the Distribution and Immediate Relief Efforts [here](#).**

**Read more about Pujya Swamiji's visit to Nepal [here](#)**









# Medical Relief



Project Hope also sent teams of healthcare practitioners, including doctors, nurses, a pharmaceutical compounder and other medical personnel, to serve in Nepal, providing medical aid to thousands of people in need.

*\*Note: In the image above, some of our Project Hope doctors are honoured by Pujya Swamiji and Shri RK Goenkaji of Emami Foundation upon their return back to Rishikesh*





# Families Served by Project Hope:



S.no	Villages	No of families
1	Bhaktipur	300
2	Patan(District)	570
3	Kirtipur( Dt-Kathmandu)	450
4	Nuwakot(District)	700
5	Sindupalchowk(District)	600
6	Kuna –ward no 5	175
7	Jaalvera	600
8	Nawalparasi	575
9	Devchuli	350
10	Sanga, Bhaktapur	375
11	Khalchowk, Ashapuri	375
12	Chandi chowk Ward no 5,8	650
13	Banchar, (Dt- Nuwakot)	460
14	Mahatre, 3 cona	390
15	Ranipauwa (Dt-Nuwakot)	570
16	Thansingh	290
17	Fatakshila	490
18	Kavre	525
19	Jyandifire(Dt- Kavre)	415
20	Pyamdi	279
21	Teku	175
22	Thulagaun Ward no-7	670
23	New Thimi	490
<b>Total</b>		<b>10,474</b>



# Long Term Rehabilitation Plan



- ❖ Rebuild the **Buddha Temple** and in so doing, restore the hope and catalyze healing in the village of Saanga, Nepal
- ❖ Build a community center named '**Matri Chhaya**' to provide residence, education and skills-training for orphaned children and widowed women
- ❖ Organize a national-scale **Prosthetic Limb Camp**
- ❖ Coordinate **WASH** (Water, Sanitation and Hygiene) awareness and education.



# Rebuilding the Temple of Hope

## *For the Healing of a Community*



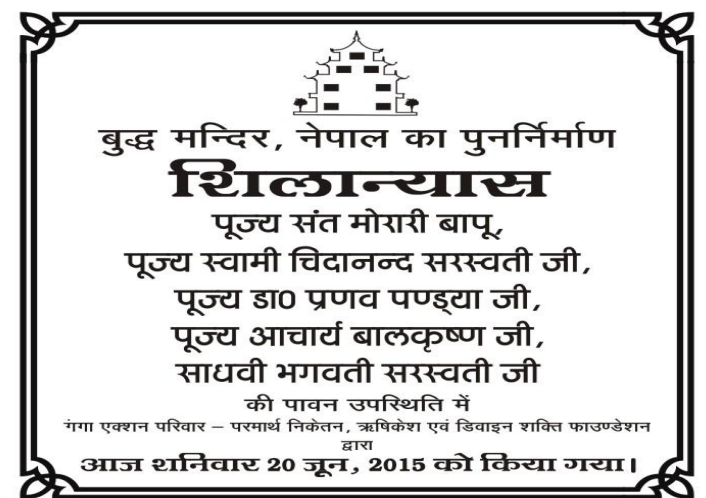
- ❖ During Pujya Swamiji's visit to Nepal, He came upon the village of **Saanga**, which was left completely ruined by the earthquake
- ❖ At the heart of the devastation lay their ancient shrine
- ❖ The sacred idol of **Lord Buddha**, ancient scriptures and texts were scattered amidst the rubble
- ❖ The village of Lamas expressed to Pujya Swamiji that the pain and anguish they felt for the damaged temple was far greater than their equally-damaged homes and buildings
- ❖ Pujya Swamiji, deeply touched by their words, inspired the local community to come together and rebuild their temple on the auspicious occasion of **Buddha Purnima** and promised the full support of Project Hope in the process

[Click here to watch Pujya Swamiji's message of hope and healing to the Nepalese people](#)



# Progress on the Temple of Hope

- ❖ Architects surveyed the site and have submitted their earthquake safe designs for the new building.
- ❖ The community with help of Project Hope volunteers have cleared up the land for the new temple.
- ❖ The first foundation stone was blessed in Rishikesh by the divine hands of:
  - ❖ **Pujya Morari Bapu**
  - ❖ **Pujya Swami Chidanand Saraswatiji,**
  - ❖ **Pujya Dr. Pranav Pandyaji,**
  - ❖ **Pujya Acharya Balkrishanji**
  - ❖ **Sadhvi Bhagawati Saraswatiji**
- ❖ The sacred first brick and foundation stone will go to Nepal once work starts just after the monsoon.



[Click here to watch the video of the special Blessing Ceremony](#)



# Work starts for the Temple





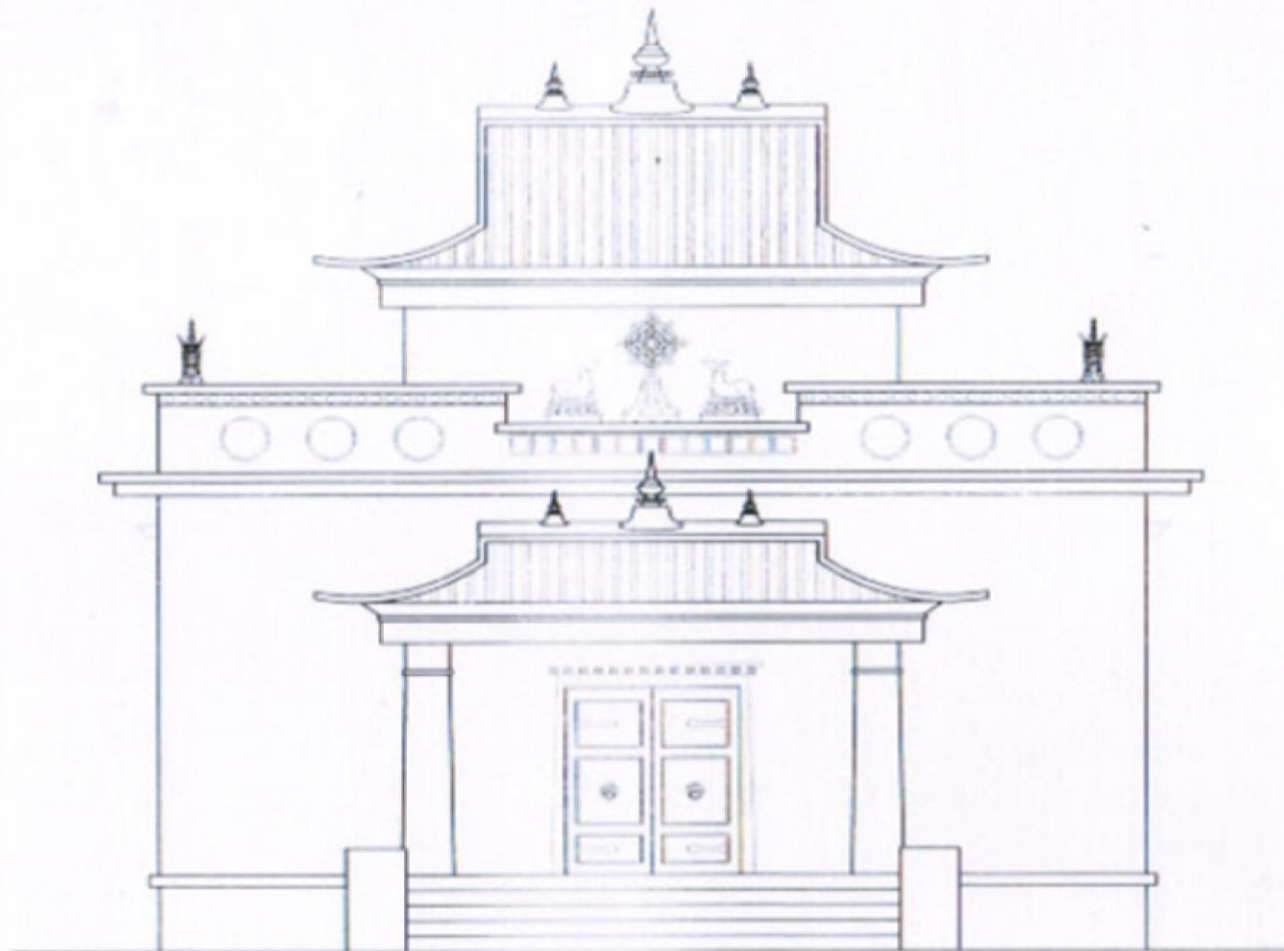
# The Temple of Hope will Include

- ❖ **Meditation Hall**
- ❖ **Library** to ensure access to all of the sacred ancient scriptures and texts
- ❖ **Digitalization of old manuscripts** to preserve and protect their sacred wisdom for many generations
- ❖ **Prayer Hall** to provide an alter/place of worship for the sacred idols of Lord Buddha and other deities





# Layout of the Temple of Hope



FRONT ELEVATION



# Proposed Temple of Hope





# Join hands with us to restore a Temple of Hope & Healing



If you are sending a draft please make it payable to  
"Swami Shukdevanand Trust" and mail it to:

Swami Shukdevanand Trust, Parmarth Niketan Ashram, c/o Nandini  
Tripathi, P.O. Swargashram, Rishikesh Himalayas – 249304 INDIA.

**Learn more at:**

**[www.DivineShaktiFoundation.org](http://www.DivineShaktiFoundation.org)**

**[www.ProjectHope-India.org](http://www.ProjectHope-India.org)**